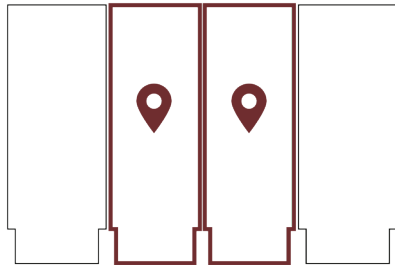


**THE CHARLESTON › 2**

Building 15



FARROW PARKWAY

**Sales Office:**

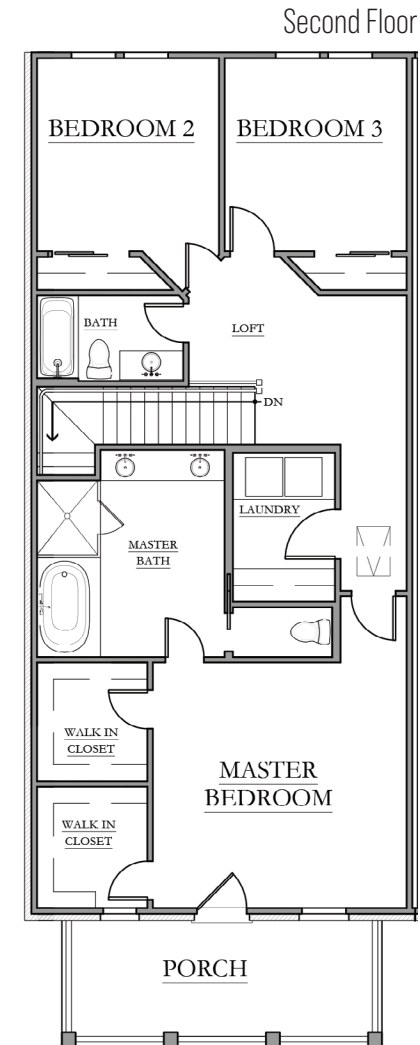
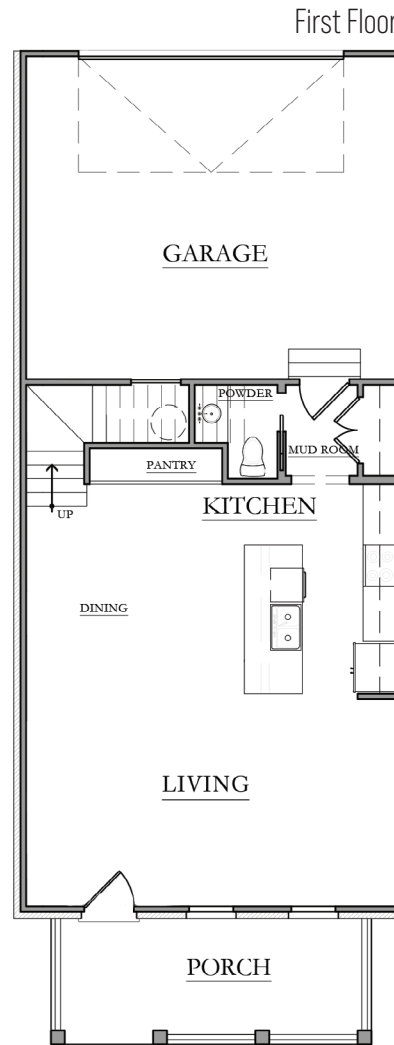
965 Hackler St. Unit A | Myrtle Beach, SC 29577

Tel: 843.839.3530

Email: Briggs@Sands-Realty.com



Please note, windows may vary by elevation. Floor plans and renderings are for conceptual use only. Square footage and dimensions are approximate. Dormers and elevations are predetermined by the architect. Units are sold unfurnished. The developer reserves the right to make any necessary changes. Copyright Sands Realty Group 12/25.



**3 BEDROOM › 2.5 BATHROOM › 2 LEVELS**

Total Heated: 1,713 sq. ft. | Total Area: 2,407 sq. ft.

**STARTING AT \$550,000**

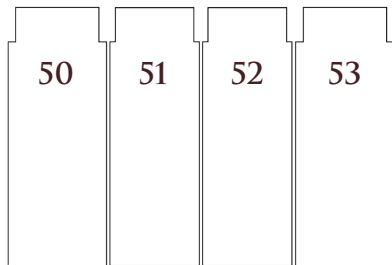
# MARKET VIEW

AT MARKET COMMON  
by Sands Companies

## THE CHARLESTON UNITS 50-53



FARROW PARKWAY



Building 15

### Sales Office:

965 Hackler St. Unit A | Myrtle Beach, SC 29577

Tel: 843.839.3530

Email: [Briggs@Sands-Realty.com](mailto:Briggs@Sands-Realty.com)



## FEATURES

- ▶ Elegant Granite Countertops in kitchen and bathrooms
- ▶ Custom Interior & Exterior Trim Package for a polished, high-end finish
- ▶ Spacious 10' Ceilings on both the 1st & 2nd floors for an airy, open feel
- ▶ Elegant Lighting Throughout for a warm, modern atmosphere
- ▶ Modern Appliance Package with high-quality, reliable appliances for convenience and performance
- ▶ Gleaming Hardwood Floors on the 1st level for lasting beauty and easy maintenance
- ▶ Designer Cabinets stylish, high-quality cabinetry in every kitchen and bath
- ▶ Durable Brick & James Hardie Exteriors for a timeless look and lasting curb appeal
- ▶ Luxurious Tile Flooring in bathrooms and laundry areas on the 2nd level
- ▶ HOA Fees Cover Pool & Amenity Center enjoy easy access to resort-style amenities
- ▶ Easy Beach Access a short distance from your door for the perfect coastal escape
- ▶ Tankless water heater

[Market-Common.com](http://Market-Common.com)



Please note, windows may vary by elevation. Floor plans and renderings are for conceptual use only. Square footage and dimensions are approximate. Dormers and elevations are predetermined by the architect. Units are sold unfurnished. The developer reserves the right to make any necessary changes. Copyright Sands Realty Group 12/25.

